



DRAPERY ESTIMATING ASSIGNMENT

INDS-11315 – MATERIALS, METHODS
AND ESTIMATING

Katie Lawrance
Prof. Shasta Beveridge

25 September 2021

DRAPERY ESTIMATING ASSIGNMENT

Katie Lawrance

Part A – Specifications

Window Treatment Textile

Manufacturer: Holly Hunt

Pattern Name and Number: Venetian Glass; 2108

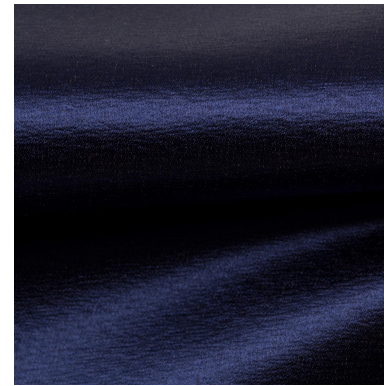
Color Name and Number: Sapphire; 25

Repeat: N/A

Fiber Content: 68% Cotton; 32% Silk

Width: 55 in.

Link: <https://www.hollyhunt.com/sku/venetian-glass/sapphire>



Justification: The Spencer's have requested a custom designed window treatment for their formal dining room. I have chosen Holly Hunt's Venetian Glass in Sapphire for their dining room due to its formal qualities and bold color. With a fiber content of silk and cotton, this midweight fabric has a beautiful sheen that feels expensive without looking too heavy. The color Sapphire was chosen because for its strong contrast to the previously selected wallpaper. These finished draperies will give the Keaton's dining room a sleek look, perfect for their modern yet formal design.

Drapery Lining

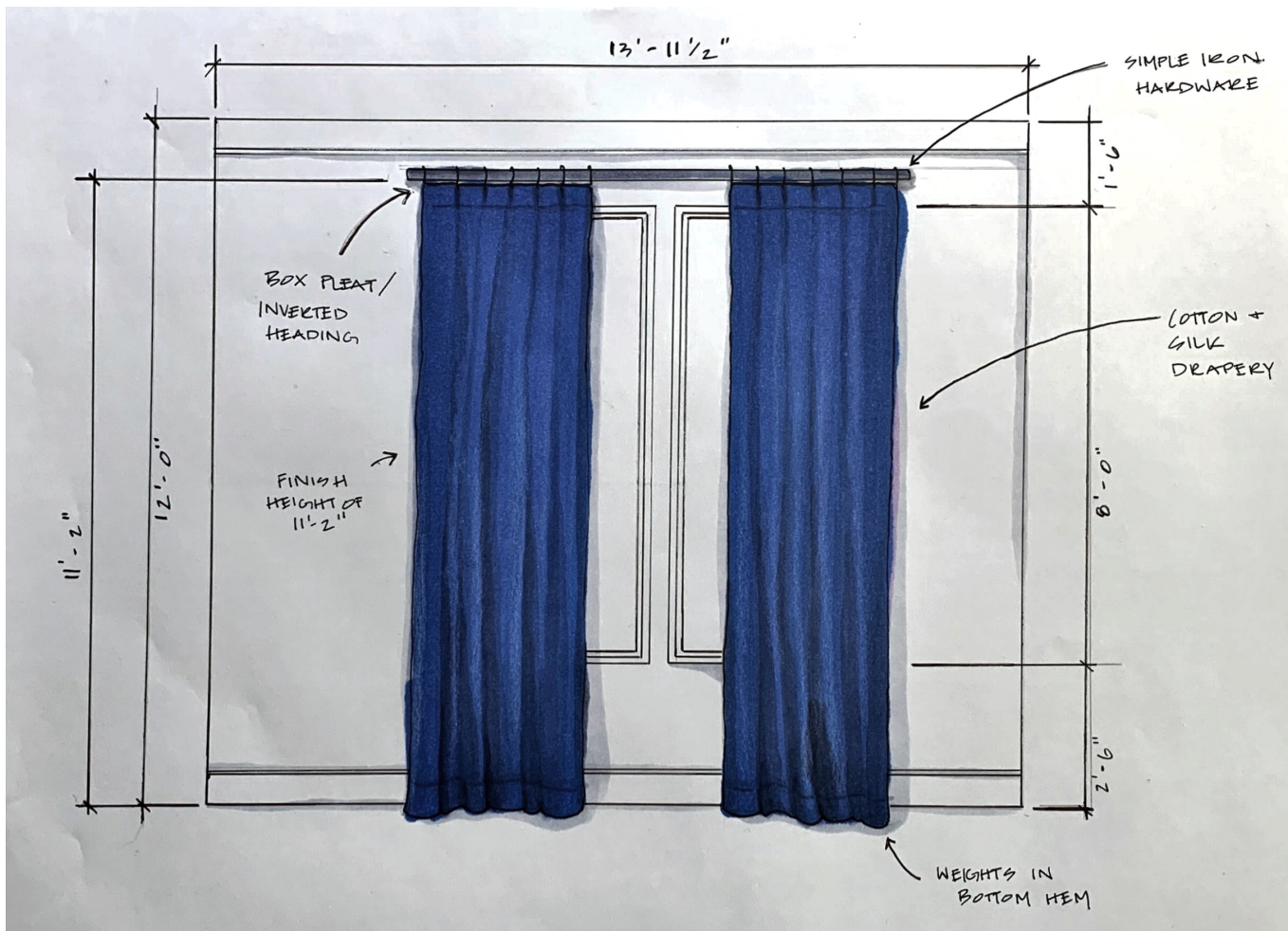
Type of Lining: Blackout

Justification: Blackout will provide insulation and shape for these drapes. This type of lining pairs well with silk to give the drapes a free flowing yet structured look that fits with the modern theme. This material will also provide insulation from Texas's aggressive heat and protect the vivid blue textile from the sun over time.

DRAPERY ESTIMATING ASSIGNMENT

Katie Lawrance

Part B – Rendered Window Elevation



Description

The Keaton's dining room draperies will be formal yet modern window panels that are fully lined with black-out material to protect the room from Texas heat. These drapes will have a box pleat/inverted heading that give the top a sleek finish. They will be hung with end capped iron hardware at the finished height of 11'-2." The bottom will have a 6-inch double hem with weights sewn in to protect the drapes from the turmoil of three children running around.

DRAPERY ESTIMATING ASSIGNMENT

Katie Lawrance

Part C – Calculations

Traversing, Pleated Draperies Worksheet

Part 1

Step 1: Calculate Flat Measure of Treatment

Trim to trim measure of window: 76 in.

Multiply to allow for stack (25%): $\times 1.25$

Total flat measure of treatment: 95

Step 2: Calculate the number of widths of fabric

Total flat measure from step 1: 95

Multiply for the fullness (2x): $\times 2$

Total fullness: 190 in.

Add 20" for overlaps and returns: $+ 20$ in.

Total: 210 in.

Divide by width of fabric: $\div 55$ in.

Widths of fabric: 3.8182 widths

Round up to whole number: 4 full widths

Step 3: Calculate length of each width

Take the finished length of drapery: 134 in.

Add 18" for hems and heading: $+ 18$

!8" allows for double 6-inch hem.

Total cut length (no repeat): 152 in.

DRAPERY ESTIMATING ASSIGNMENT

Katie Lawrance

Step 4: Combine steps 2 and 3

Take the total cut length from step 3: 152 in.

Multiply by number of widths from step 2: $\times 4$

Total length of fabric required: 608 in.

Divide by 36 to convert to yards: $\div 36$

Total yards: 16.8888

Round to nearest $\frac{1}{2}$ yard: 17 yards

Step 5: Lining

Take the total cut length from step 3: 152 in.

Multiply by number of widths from step 2: $\times 4$

Total length of fabric required: 608 in.

Divide by 36 to convert to yards: $\div 36$

Total yards: 16.8888

Round to nearest $\frac{1}{2}$ yard: 17 yards

WALL COVERING ESTIMATING ASSIGNMENT

Katie Lawrance

Questions

a. What is the finished length of your draperies?

134 in.

b. What is the Adjusted Cut Length of your drapery panels?

152 in. (*No repeat*)

c. How many widths of fabric are needed for your window treatment?

4 widths

d. How many yards of fabric will be needed for your window treatment?

17 yards

e. How many yards of lining will be needed for your window treatment?

17 yards

WALL COVERING ESTIMATING ASSIGNMENT

Katie Lawrance

Bonus Calculation

Using the yardage amounts calculated above and the pricing details below, what is the total cost of the job to the client?

Cost of fabric and lining: 17 yds x 73 yds = 1,241
17 yds x 6 yds = 102
1,241 + 102 = 1,343

+ Shipping: 1,343 + 35 = 1,378

Labor: 55 x 4 = 220
1,378 + 220 = 1,598

Installation: 1,598 + 155 = 1,753

Hardware: 1,753 + 220 = 1,973

Designer Markup: 1,973 x 0.30 = 591.9
1,973 + 591.9 = 2,564.9

Sales Tax: 1,973 x 0.0825 = 162.77
2,564.9 + 162.77 = 2,727.67

Total cost: \$2,727.67

HOLLY HUNT

Date created: Sep 26, 2021
Great Plains 2108/25

Venetian Glass: Sapphire



Details

Application	Multi use Drapery
Type	Silk Specialty
Composition	68% Cotton 32% Silk
Width	55.0 in (139.75 cm)
Testing & Certifications	Passes CAL 117 Passes BS 5852 source 0 with FR rated foam
Freight Code	B



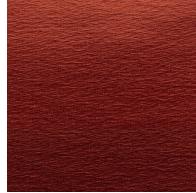
Colorways



Venetian Glass:
Opal



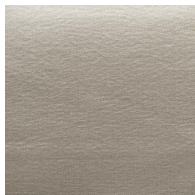
Venetian Glass:
Glace



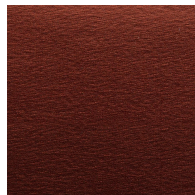
Venetian Glass:
Pomodoro



Venetian Glass:
Champagne



Venetian Glass:
Platinum



Venetian Glass:
Red Rock



Venetian Glass:
Quicksilver



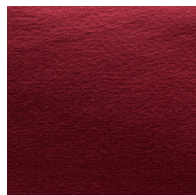
Venetian Glass:
Lemon



Venetian Glass:
Cavern



Venetian Glass:
Sapphire



Venetian Glass:
Cranberry

Notes

Product Notes

Great Plains does not recommend this item for use on HOLLY HUNT upholstered products

Cleaning & Care

Please refer to tearsheet for cleaning & care

Product Sale

